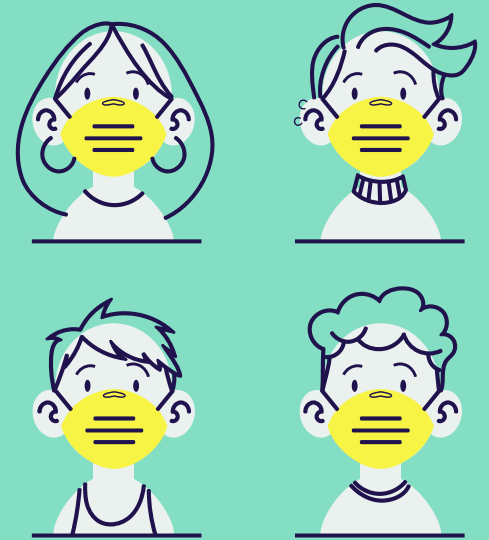


COVID-19

SCREENING DEL PERSONAL DE SALUD

OSEP



Lic. En Bioquímica Romina Manrique

EXPOSICION DEL PERSONAL DE SALUD

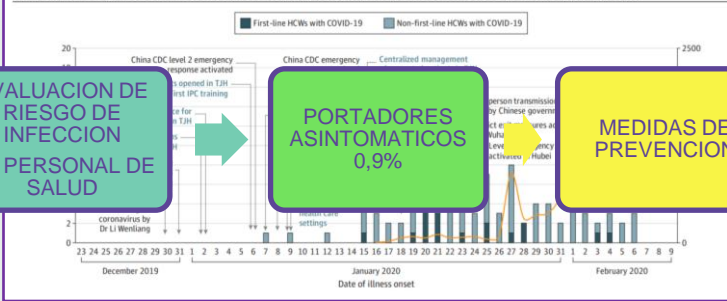


Original Investigation | Infectious Diseases

Coronavirus Disease 2019 (COVID-2019) Infection Among Health Care Workers and Implications for Prevention Measures in a Tertiary Hospital in Wuhan, China

Xiaoquan Lai, MD; Minghuan Wang, MD, PhD; Chuan Qin, MD, PhD; Li Tan, MD, PhD; Lusen Ran, MD; Daiqi Chen, BM; Han Zhang, MD, PhD; Ke Shang, MD, PhD; Chen Xia, MS; Shaokang Wang, MS; Shabei Xu, MD, PhD; Wei Wang, MD, PhD

Figure. Change of Daily Infected Numbers of Health Care Workers (HCWs) With Coronavirus Disease 2019 (COVID-19) in Tongji Hospital (TJH)



EVALUACION DE RIESGO DE INFECCION DE PERSONAL DE SALUD

PORTADORES ASINTOMATICOS 0,9%

MEDIDAS DE PREVENCION

Table 1. Basic Information for 9648 HCWs and 10 HCWs With Etiologically Confirmed COVID-19

Characteristic	No. (%)		HCWs without COVID-19 (n = 9538)	IRR (95% CI) ^a	P value ^b	Estimated cumulative incidence (n = 9648), %	Proportion of all COVID-19 cases in hospital (n = 2009), %
	HCWs (n = 9648)	HCWs with COVID-19 (n = 110)					
Age, y							
≥45	1134 (11.8)	32 (29.1)	1102 (11.6)	1 [Reference]	NA	1.1	5.5
<45	8514 (88.2)	78 (70.9)	8436 (88.4)	1.9 (1.3-3.0)	.002	0.9	3.9
Sex							
Men	2550 (26.4)	31 (28.2)	2519 (26.4)	1 [Reference]	NA	1.2	1.5
Women	7098 (73.6)	79 (71.8)	7019 (73.6)	1.6 (1.01-2.4)	.04	1.1	3.9
Job category							
Physician	2151 (22.3)	26 (23.6)	2125 (22.2)	1 [Reference]	NA	1.2	1.3
Nurse	4417 (45.8)	62 (56.4)	4355 (45.7)	2.7 (1.7-4.3)	<.001	1.4	3.1
Health care assistant	3080 (31.9)	22 (20.0)	3058 (32.1)	0.8 (0.4-1.4)	.38	0.7	1.1
Department							
Fever clinic or ward	3110 (32.2)	17 (15.5)	3093 (32.4)	1 [Reference]	NA	0.5	0.8
Other clinical department ^c	4506 (46.7)	73 (66.4)	4433 (46.5)	3.1 (1.8-5.2)	<.001	1.6	3.6
Department with no patient contact ^d	2032 (21.1)	20 (18.2)	2012 (21.1)	1.2 (0.6-2.2)	.63	1.0	1.0

Original Investigation | Infectious Diseases

Prevalence and Clinical Presentation of Health Care Workers With Symptomatic SARS-CoV-2 Infection During an Early Community Transmission Period

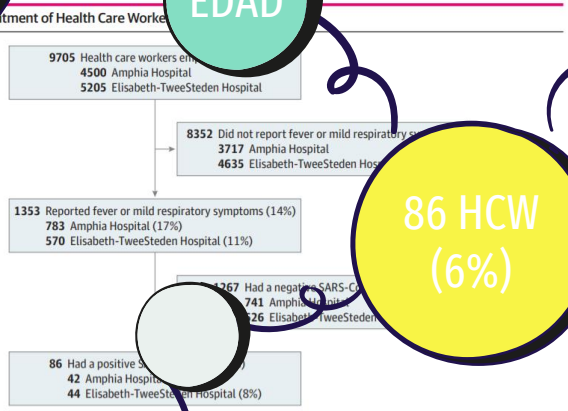
Marjolein F. Q. Kluytmans, PhD; Suzanne D. Hoogkamp, PhD; Robbert G. Bentvelsen, MD; Wouter van den Bijllaardt, MD; Anne J. G. van Oudheusden, PhD; J. Verweij, PhD; Marion P. G. Koopmans, PhD; Jan A. J. W. Kluytmans, PhD

X = 49

EDAD

M 17%
F 83%

GENERO



86 HCW
(6%)

NEXO

50%
EXPOSICION A
PACIENTES

53%
FIEBRE

EXPOSICION DEL PERSONAL DE SALUD SINTOMATICO LEVE



SARS-CoV-2 indicates severe acute respiratory syndrome coronavirus 2.



High prevalence of asymptomatic COVID-19 in haemodialysis: learning day by day in the first month of the COVID-19 pandemic

[Marta Albalade](#),^{a,*} [Patricia Arribas](#),^a [Esther Torres](#),^a [Melissa Cintra](#),^a [Roberto Alcázar](#),^a [Marta Puerta](#),^a [Mayra Ortega](#),^a [Fabio Procaccini](#),^a [Juan Martín](#),^a [Eva Jiménez](#),^b [Inés Fernández](#),^b [Patricia de Sequera](#),^a and Grupo de Enfermería HUIJ¹

- 44 PROFESIONALES DE LA SALUD
- ✓ 34% SINTOMATICOS: 9% PCR +
- ✓ 5% CASOS ALTAMENTE SOSPECHOSOS



[eLife](#). 2020; 9: e58728.

Published online 2020 May 11. doi: [10.7554/eLife.58728](https://doi.org/10.7554/eLife.58728)

PMCID: PMC7314537

PMID: [32392129](https://pubmed.ncbi.nlm.nih.gov/32392129/)

Screening of healthcare workers for SARS-CoV-2 highlights the role of asymptomatic carriage in COVID-19 transmission

asymptomatic carriage in COVID-19 transmission
screening of healthcare workers for SARS-CoV-2 highlights the role of

- ❖ 1032 PROFESIONALES DE SALUD
- 30 PCR +
- 57% ASINTOMATICO

REVIEW

Tabla 2. Resumen de las guías de práctica clínica y recomendaciones relevadas

Institución/país	Año	Recomendación
ARGENTINA		
Ministerio de Salud de la Nación ²³	2020	Solo testeo de personal sintomático y contextualizado según tipo de contacto y protección del personal
OTROS PAÍSES		
Chile ³²	2020	Testeo mediante detección de IgG e IgM en casos seleccionados epidemiológicamente de trabajadores de salud. No aclara presencia o ausencia de síntomas
Colombia ³³	2020	Testeo masivo de trabajadores de la salud en áreas definidas mediante PCR y/o IgM e IgG seriada según resultado de PCR
Brasil ³¹	2020	Prioridad de testeo en trabajadores de la salud sintomáticos. No menciona asintomáticos
OECD, ³⁰	2020	Prioridad de testeo en trabajadores de la salud. No específica en casos asintomáticos
ECDC. Infection prevention and control and preparedness for COVID-19 in healthcare settings - third update. ²⁷	2020	Prioridad de testeo en trabajadores de la salud sintomáticos. No menciona asintomáticos
ECDC. Surveillance of COVID-19 at long-term care facilities in the EU/EEA. ²⁸	2020	Si, solo en caso de detección de un caso positivo entre los residentes o personal del centro asistencial
CD ^{26,29}	2020	Prioridad de testeo en trabajadores de la salud. No específica en casos asintomáticos
Reino Unido ^{36,37}	2020	Prioridad de testeo en trabajadores de la salud. Solo en casos asintomáticos aislados por familiar enfermo
Canadá ^{34,40}	2020	Prioridad de testeo en trabajadores de la salud sintomáticos. Test en trabajadores asintomáticos de centros de cuidado crónico con caso detectado
Australia ³⁵	2020	Test en caso de presentar síntomas, uno de ellos debe ser fiebre.

Fuente: Elaboración propia en base a las guías de práctica clínica y recomendaciones relevadas. En aquellas celdas donde dice NM es porque la información relevada no hacía mención a la tecnología evaluada o no especifica la indicación para su utilización.



PROTOCOLO DEL MINISTERIO DE SALUD

POLÍTICAS Y PROCEDIMIENTOS

Categoría: General

Versión N°: 1

Fecha de Vigencia: julio 2020

Fecha de Vencimiento: No definida

Código: NOR-MSAL-ANEXVIII.COVID-2019-1.8

CORONAVIRUS

Anexo VIII: Recomendaciones para el manejo del personal de salud expuesto a SARS-CoV-2

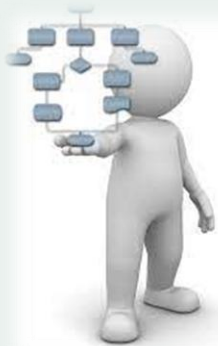


MENDOZA
GOBIERNO

Ministerio de Salud,
Desarrollo Social y Deportes

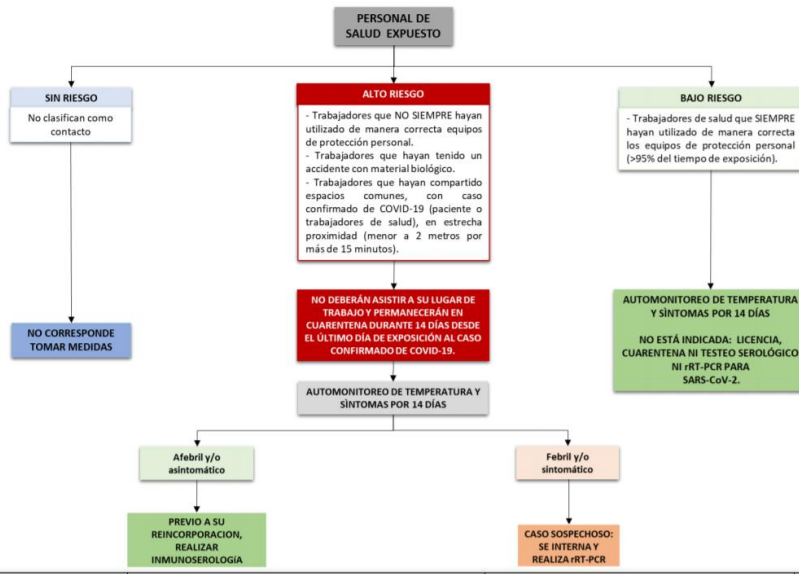
ANEXO III: RECOMENDACIONES PARA EL
MANEJO DEL PERSONAL DE SALUD EXPUESTO



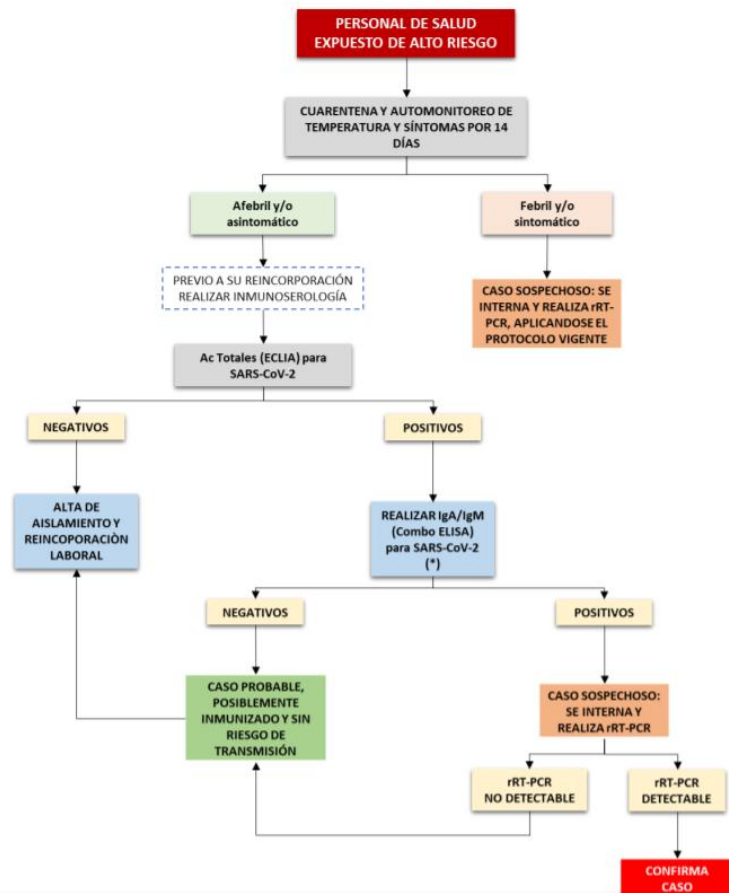


ALGORITMOS

ALGORITMO 1

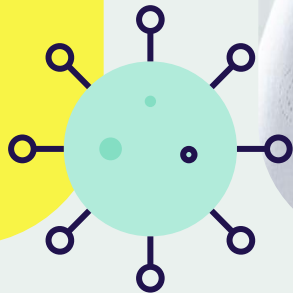


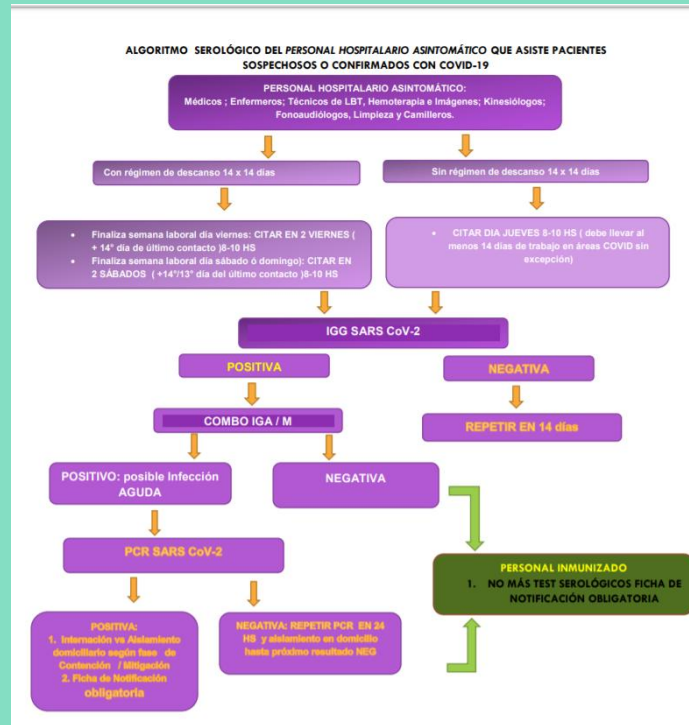
ALGORITMO 2





**BRINDAR
PROCEDIMIENTO DE
ACTUACIÓN FRENTE
A EXPOSICIÓN A UN
CASO SOSPECHOSO
O CONFIRMADO.**





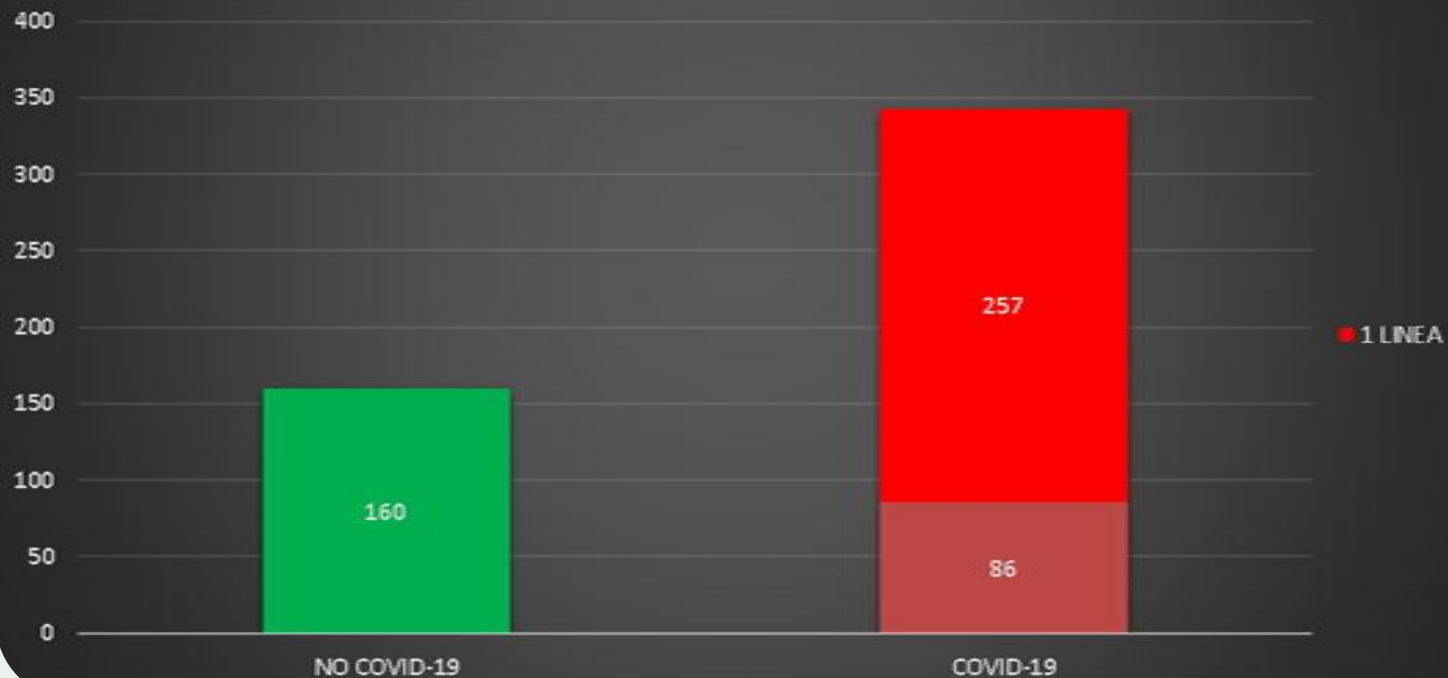
PROTOCOLO OSEP



ESTADÍSTICA

DOSAJE DE ANTICUERPOS ANTI SARS-COV 2

AREA DE TRABAJO HOSPITAL EL CARMEN. OSEP

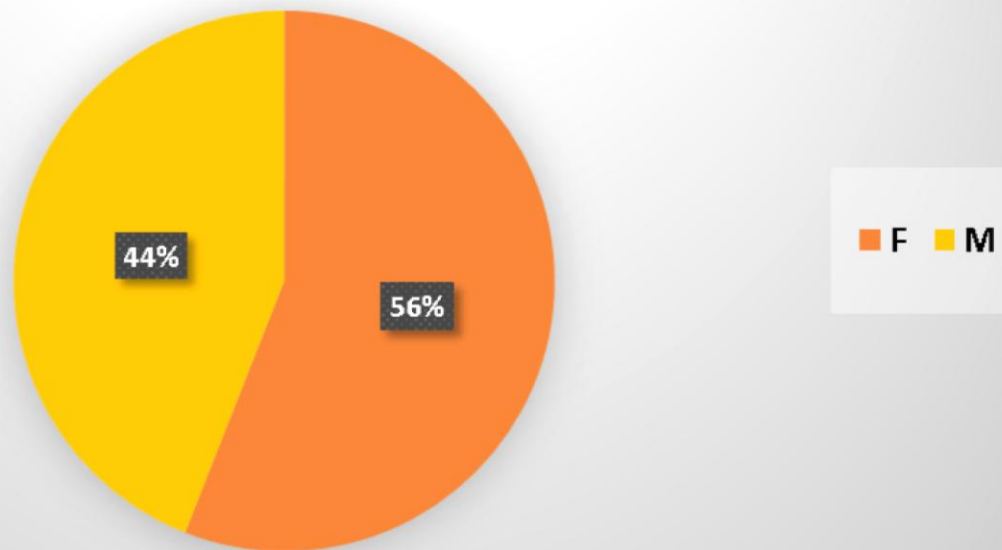


NO COVID-19

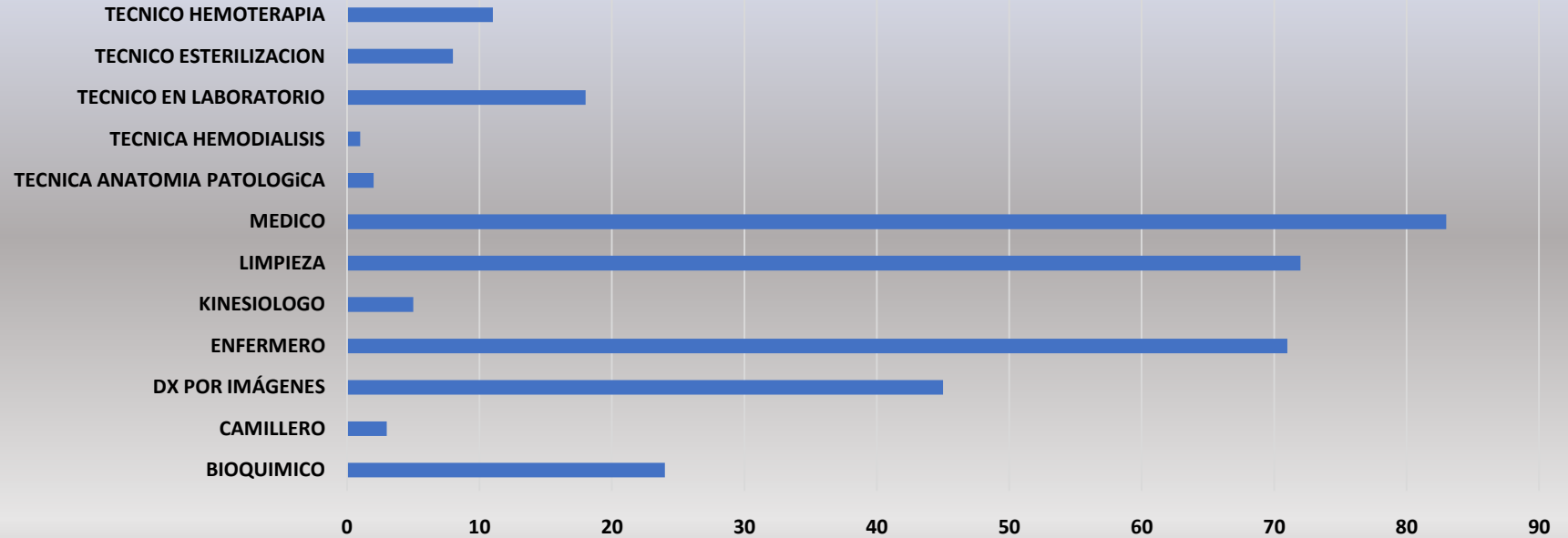
COVID-19

0

GENERO PERSONAL DE SALUD EXPUESTO A COVID-19

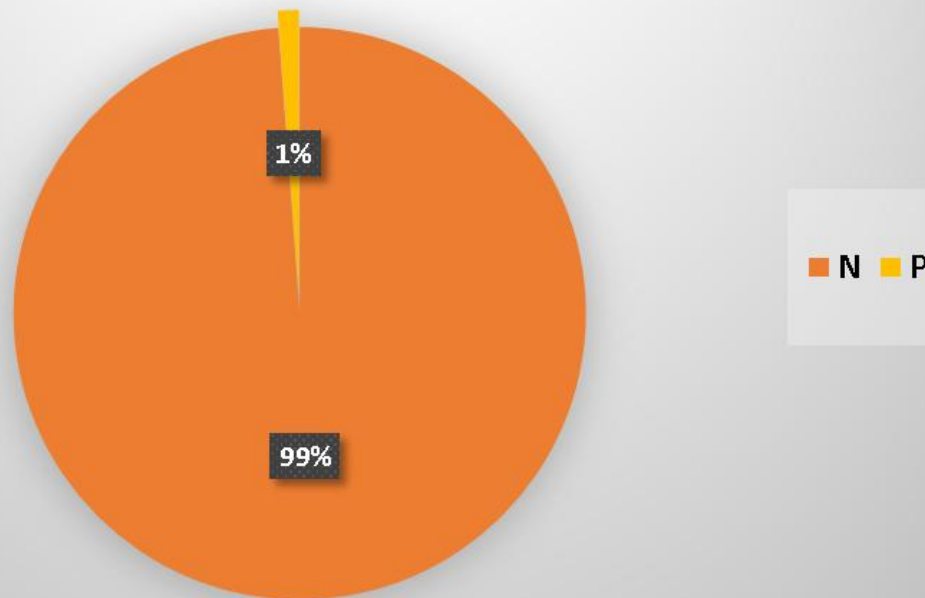


PERSONAL DE SALUD EXPUESTOS A COVID-19





DOSAJE DE ANTICUERPOS TOTALES ANTI SARS- COV-2 PERSONAL DE SALUD HOSPITAL EL CARMEN. OSEP



6
PROFESIONALES
DE SALUD

PERSONAL DE SALUD ANTI SARS- COV 2 POSITIVOS



**PERSONAL MEDICO 1º
LÍNEA**

Sexo Masculino
Sintomático-PCR neg.
Asintomático- PCR neg.



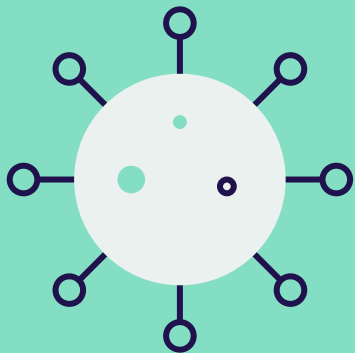
**PERSONAL MEDICO 2º
LÍNEA**

Sexo Femenino
Asintomático
PCR: neg

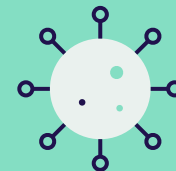


**PERSONAL DE
ENFERMERÍA DE 1º LÍNEA**

Sexo Femenino
Asintomático
PCR neg.



 <p>Si sos paciente recuperado de COVID-19</p> <p>Solo VOS podés ayudar</p> <p>Doná plasma</p>  <p>Servicio de Hemoterapia del Hospital El Carmen - T:0261 4429122 hemoterapia_osep@osep.mendoza.gov.ar</p>	<p>Solo VOS podés ayudar</p> <p>Doná plasma</p> <p>Requisitos: Estar recuperado con</p> <p>14 a 21 días libre de COVID-19</p>   <p>Servicio de Hemoterapia del Hospital El Carmen - T:0261 4429122 hemoterapia_osep@osep.mendoza.gov.ar</p>
<p>Doná plasma</p> <p>Un persona recuperada, puede donar plasma e inclusive, hasta 4 veces, si sus niveles de anticuerpos son adecuados.</p> <p>Solo VOS podés ayudar</p>   <p>Servicio de Hemoterapia del Hospital El Carmen - T:0261 4429122 hemoterapia_osep@osep.mendoza.gov.ar</p>	<p>Solo VOS podés ayudar</p> <p>Doná plasma</p> <p>Como cualquier otra donación de sangre o sus componentes es voluntaria y sin fines de lucro.</p>   <p>Servicio de Hemoterapia del Hospital El Carmen - T:0261 4429122 hemoterapia_osep@osep.mendoza.gov.ar</p>



MUCHAS GRACIAS



**WE MUST EACH
DO OUR PART**

01. PREVENTION

What to do to help prevent
the spread of the virus

02. SURFACES

How long the virus stays
on different surfaces

03. SPREAD

Some numbers and data
about the spread

04. CONCLUSION

Together we can overcome
this pandemic

EVOLUTION OF THE AMOUNT OF CASES

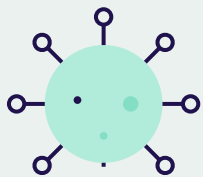
Evolution of confirmed COVID-19 cases in the world

JANUARY: 9799 ●

FEBRUARY: 75377 ●

MARCH: 630457 ●

To modify this graph, click on it, follow the link, change the data and paste the new graph here



HOW DO YOU GET COVID-19?

A person can contract COVID-19 if:

- They come in contact with another person infected with the virus
- Someone infected coughs or sneezes directly to them
- They touch any surface with little droplets from infected people's cough or sneezes and then touch their eyes, nose or mouth

IF SOMEONE IN YOUR HOME IS SICK

01

Continue to practice everyday preventive actions as usual

02

Keep the ill person in a separate room from others in the household

03

If caring for a sick household member, monitor your own health too

04

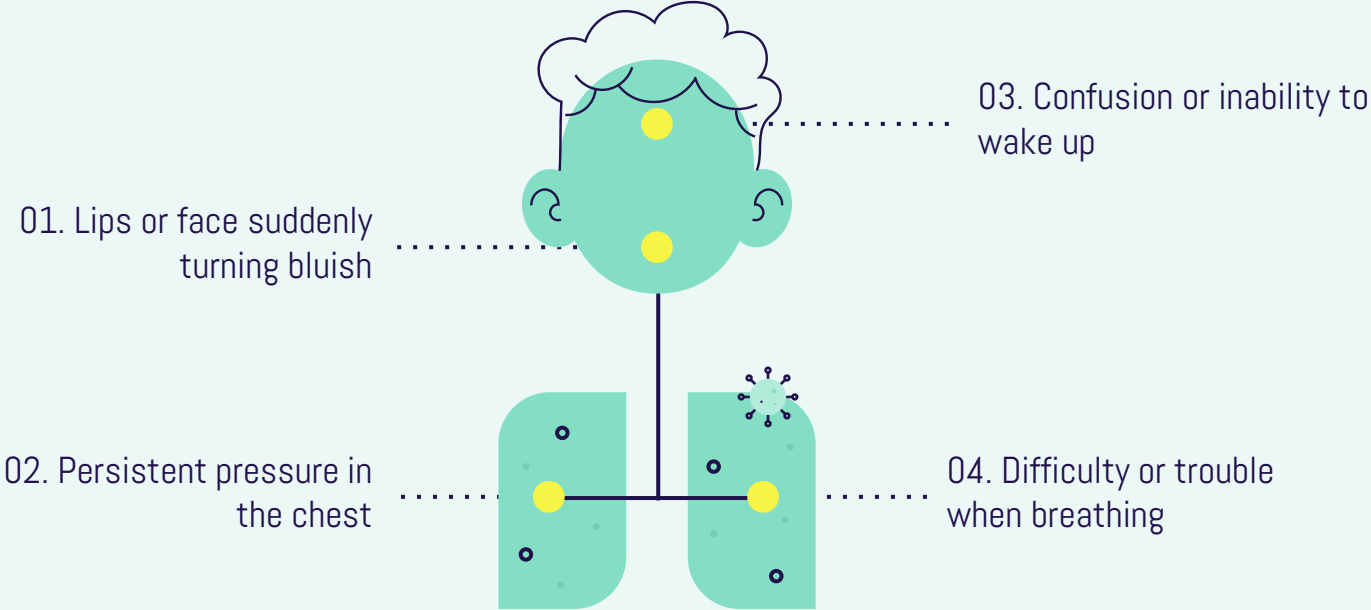
Keep surfaces disinfected and also avoid sharing personal items

05

If you become sick, stay in contact with others by phone or email

06

Take care of the emotional health of your household members, including yourself



PROTECTION TIPS



Maintain social distancing



Keep objects and surfaces clean



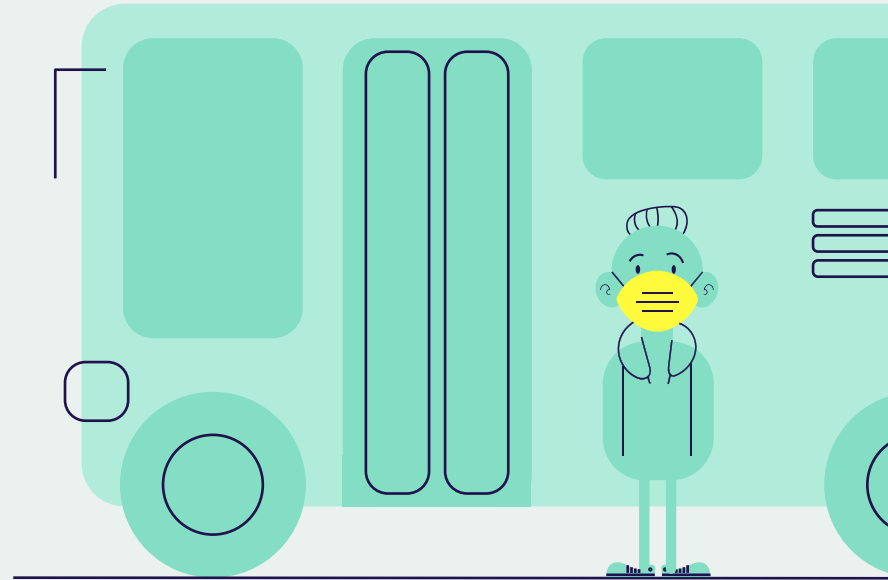
Wash your hands frequently



Don't touch eyes, nose or mouth

PUBLIC TRANSPORT RULES

- Cash is not accepted (only cards)
- Contact between driver and passenger must be kept to a minimum
- Taxis and other vehicles for hire can only accept one passenger per fare (excepting underage and elderly people)
- Cover yourself with your elbow when coughing and use hand sanitizer
- Try not to touch anything



PERSONAL PROTECTIVE EQUIPMENT

01



Lab coat or apron
(wear it correctly)

Surgical masks and
respirators



02

03



Eye or face protection
(such as glasses)

Safety gloves (must
be worn to the wrist)



04

COVID-19 IN DIFFERENT SURFACES

SURFACE	TIME
Sprayers	3 hours
Copper	4 hours
Plastic	2-3 days

SURFACE	TIME
Cardboard	24 hours
Steel	2-3 days
Wood	4 days

WASH YOUR HANDS

01



60% alcohol

02



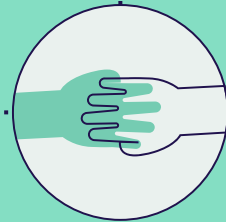
Fingers

03



Palm to palm

04



Fingernails

WASH YOUR HANDS

05



Wrists

06



Thumbs

07



Rub until dry

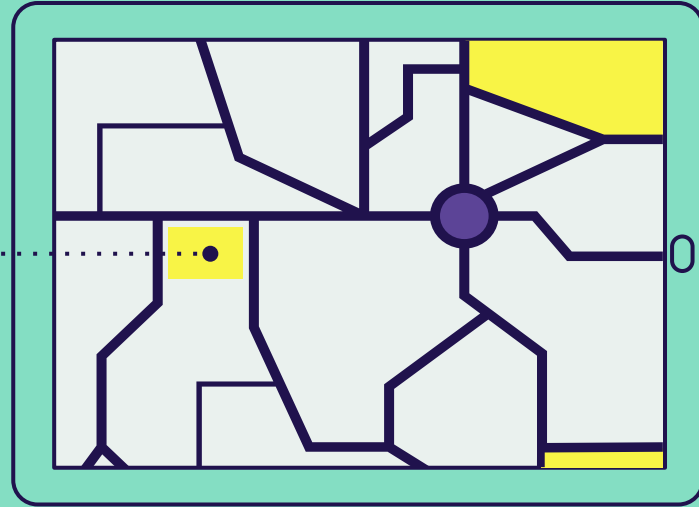
08



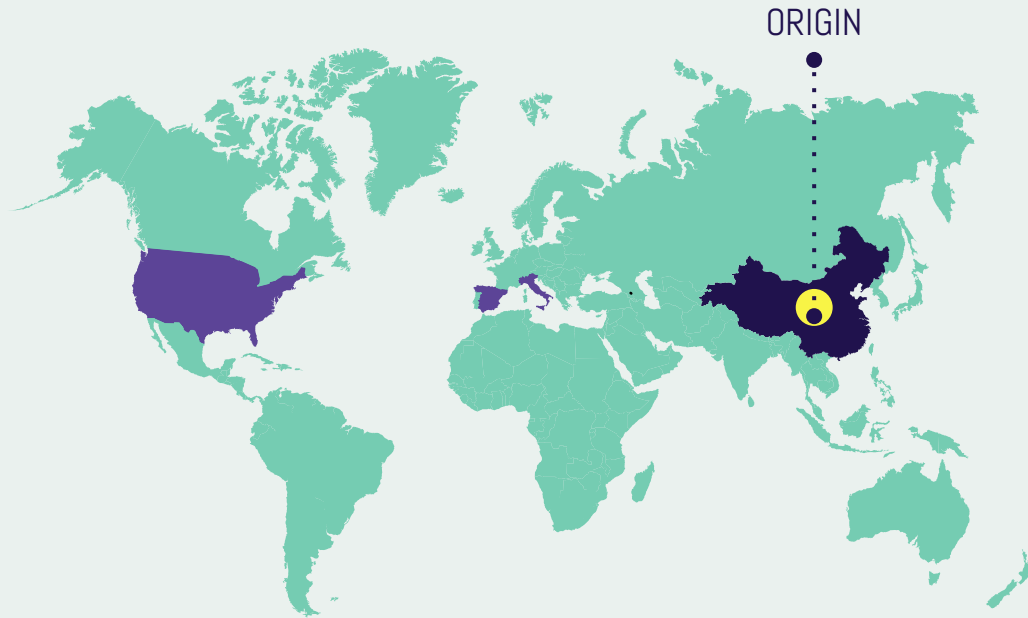
Disinfected!

INFECTED AREAS

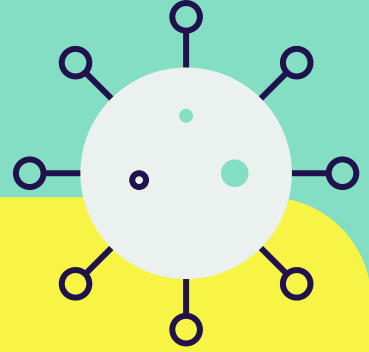
You can replace the image on the screen with your own work. Just delete this one, add yours and send it to the back



COUNTRIES WITH THE HIGHEST INFECTION RATE

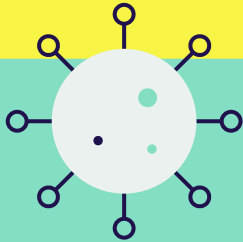


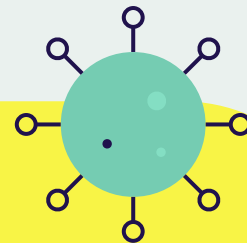
These are the countries with the highest amount of confirmed cases over time: United States, Spain, Italy and China (where this virus first originated)



164.536

Total recovered people from COVID-19 as of March 2020



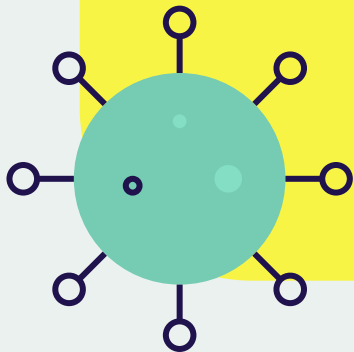


100,000+

Confirmed cases in Spain

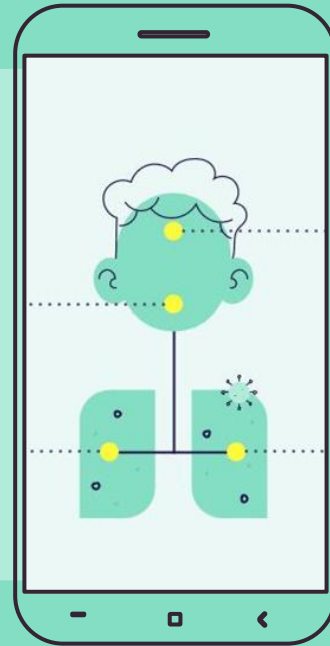
10,000+

Confirmed cases in South Korea

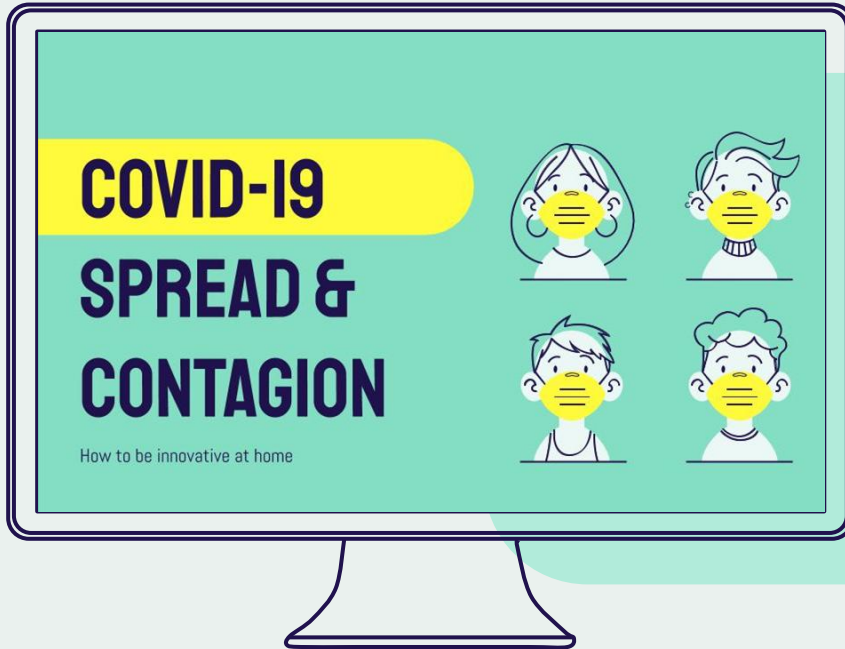


MOBILE APP

You can replace the image on the screen with your own work. Just delete this one, add yours and send it to the back



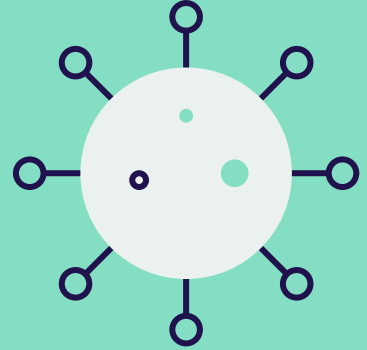
DESKTOP SOFTWARE



You can replace the image on the screen with your own work. Just delete this one, add yours and send it to the back

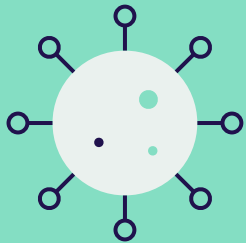


THANKS!



Do you have any questions?

youremail@freepik.com
+91 620 421 838
yourcompany.com



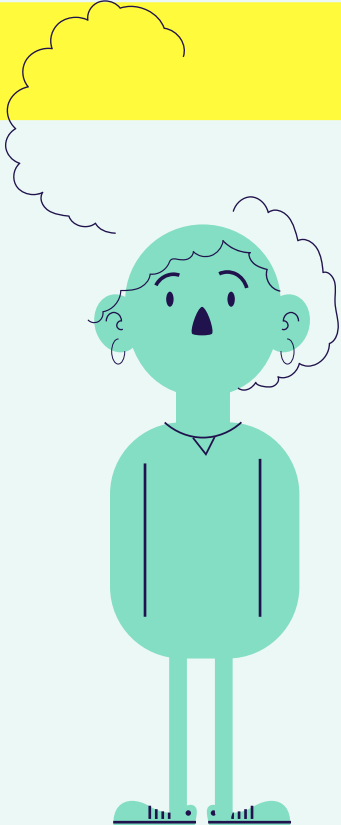
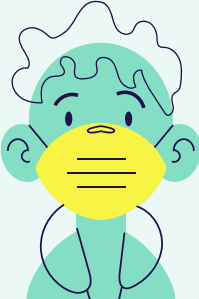
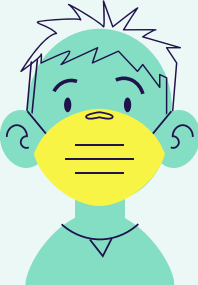
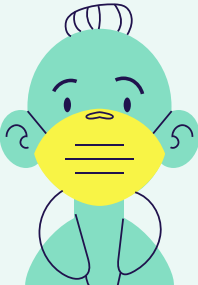
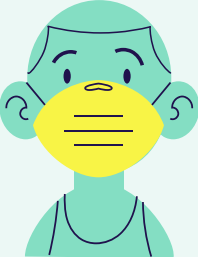
CREDITS: This presentation template was created by Slidesgo, including icons by Flaticon, and infographics & images by Freepik

Please keep this slide for attribution

ALTERNATIVE RESOURCES



ALTERNATIVE RESOURCES



RESOURCES

VECTORS

- How to wash your hands
- Tablet gps navigation
- Collection of people avatars illustration
- People wearing medical mask concept
- Wuhan coronavirus symptoms and prevention
- Hand sanitizer in flat design

PHOTOS

- Quarantine daily activities and woman medium shot
- Bathroom sink with liquid soap and washing hands

ICON

- Coronavirus

Instructions for use

In order to use this template, you must credit [Slidesgo](#) by keeping the **Thanks** slide.

You are allowed to:

- Modify this template.
- Use it for both personal and commercial projects.

You are not allowed to:

- Sublicense, sell or rent any of Slidesgo Content (or a modified version of Slidesgo Content).
- Distribute Slidesgo Content unless it has been expressly authorized by Slidesgo.
- Include Slidesgo Content in an online or offline database or file.
- Offer Slidesgo templates (or modified versions of Slidesgo templates) for download.
- Acquire the copyright of Slidesgo Content.

For more information about editing slides, please read our FAQs or visit Slidesgo School:

<https://slidesgo.com/faqs> and <https://slidesgo.com/slidesgo-school>

Fonts & colors used

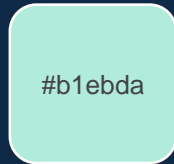
This presentation has been made using the following fonts:

Staatliches

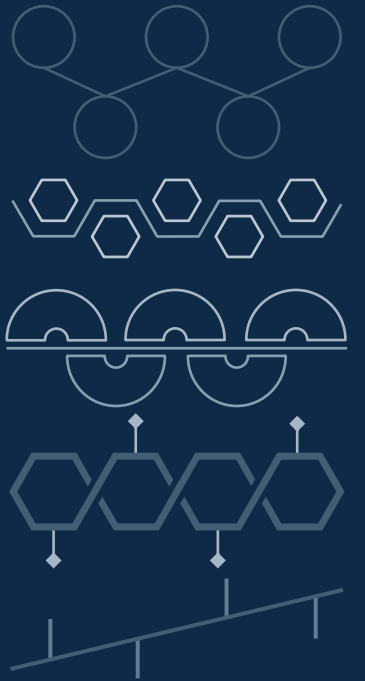
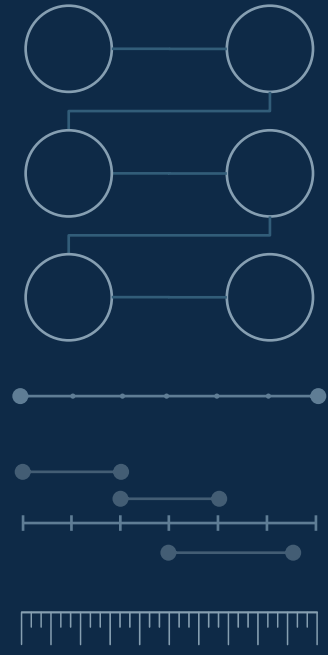
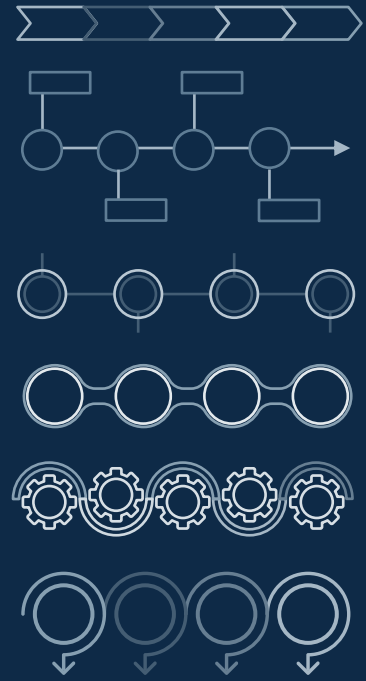
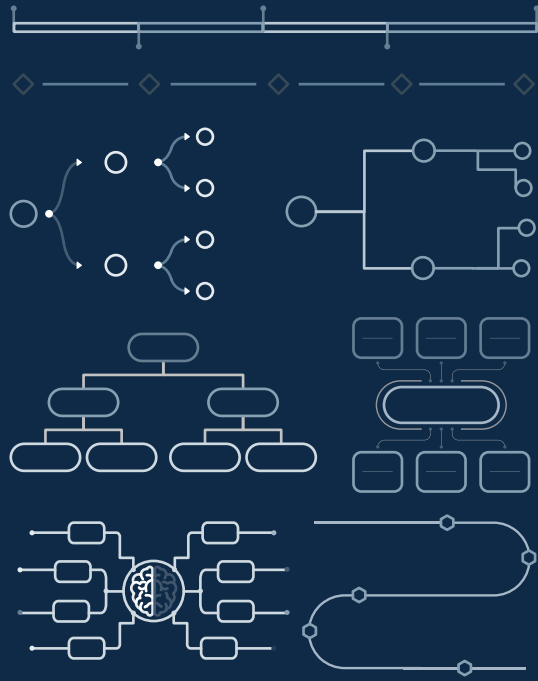
(<https://fonts.google.com/specimen/Staatliches?query=staa>)

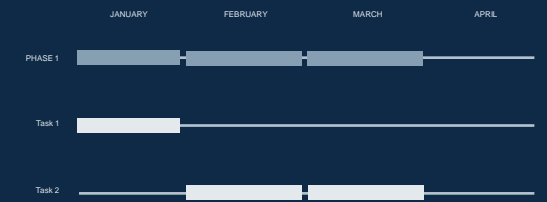
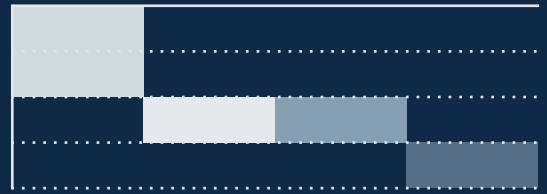
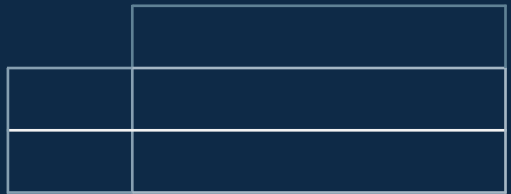
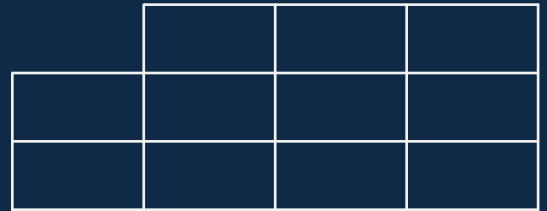
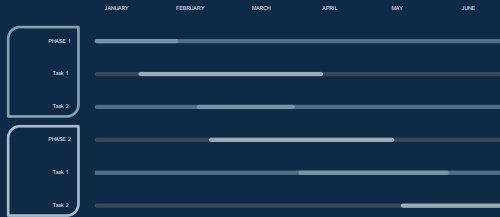
Abel

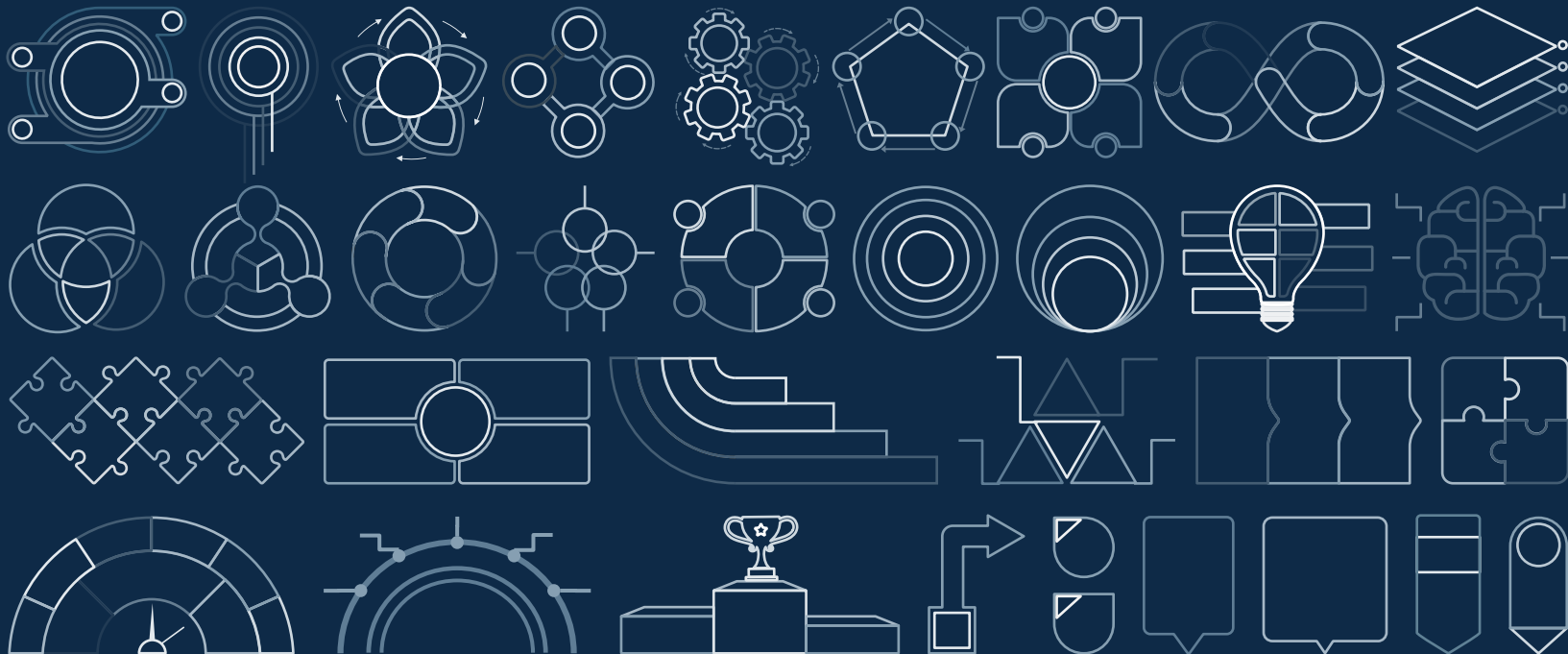
(<https://fonts.google.com/specimen/Abel?query=abe>)

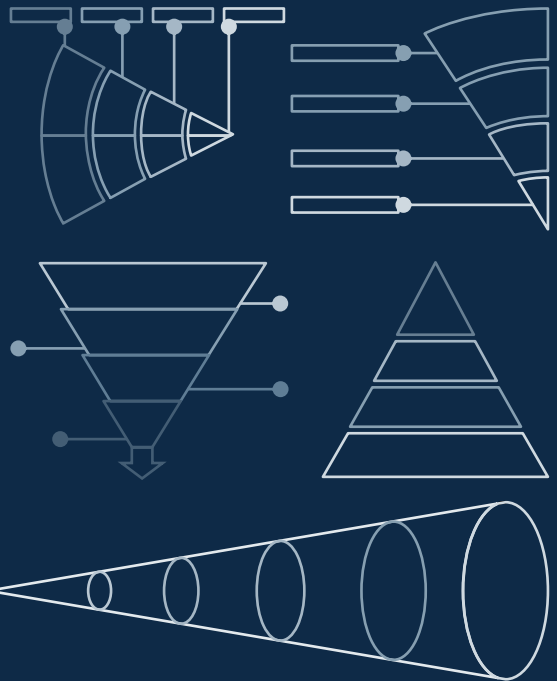
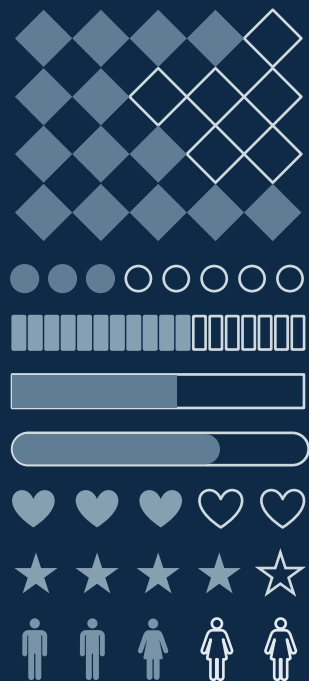
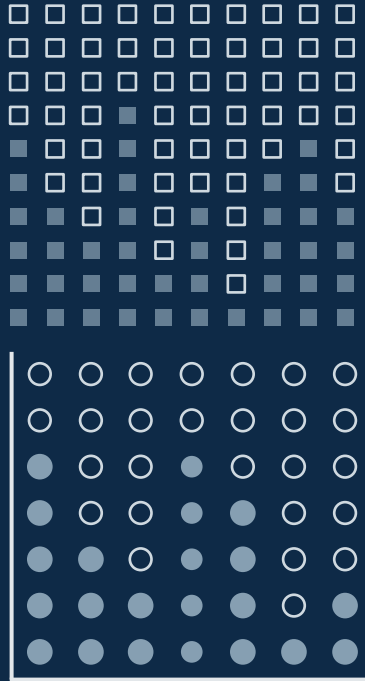












...and our sets of editable icons

You can resize these icons without losing quality.

You can change the stroke and fill color; just select the icon and click on the paint bucket/pen.

In Google Slides, you can also use [Flaticon's extension](#), allowing you to customize and add even more icons.



Creative Process Icons



Performing Arts Icons



Nature Icons



SEO & Marketing Icons



